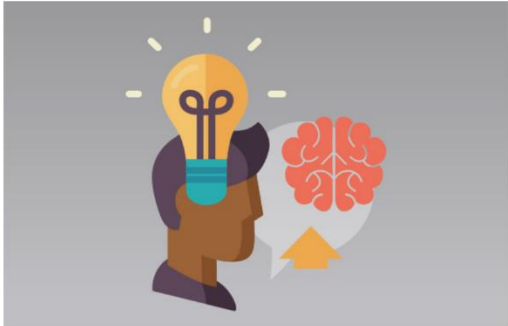


# Graduate attributes

## Activity cards



Graduate attributes provide a common language to support reflection, dialogue and personal development planning. The five attributes are intentionally broad to accommodate diverse subject areas, levels of the curriculum, academic partners and employers. They were developed through extensive consultation with university staff, students and employers.

Please share your examples of working with the graduate attributes with the Learning and Teaching Academy (LTA)



[lta@uhi.ac.uk](mailto:lta@uhi.ac.uk)



[www.uhi.ac.uk/lta](http://www.uhi.ac.uk/lta)

The UHI logo, consisting of the letters 'UHI' in a bold, black, sans-serif font. The 'U' and 'H' are connected at the top. In the background of the top right corner, there is a decorative pattern of grey plus signs of varying sizes arranged in a grid-like fashion.

**UHI**

# How to use these cards

These cards support reflection, dialogue and personal development planning. The cards also include prompt questions to enable reflection on learning and wider student participation.

- Academic skills
- Communication skills
- Self-management
- Interpersonal skills
- Social awareness



1  
Consider

- Which attributes are most relevant to you?
- Why are they relevant?



2  
Reflect

- Start with one attribute
- Reflect using prompt questions



3  
Plan

- Note down any next steps
- Keep track of your progress



# Academic skills



- Application of knowledge
- Willingness to learn
- Problem solving
- Research skills
- Reflective practice
- Knowledge of plagiarism and copyright

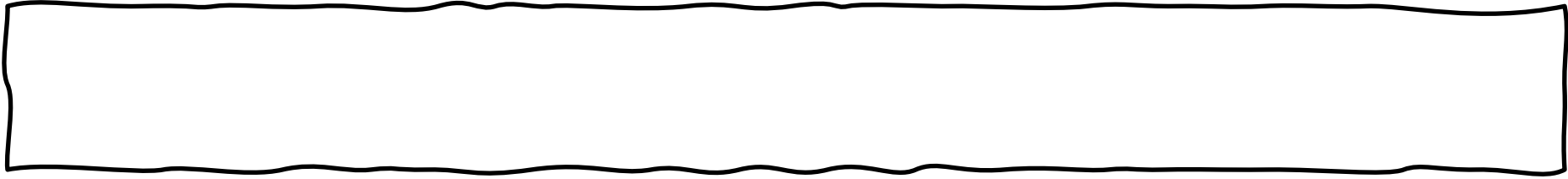


Using the bullet points above as a starting point, reflect on how you have developed in this area as a result of your studies and student activities.

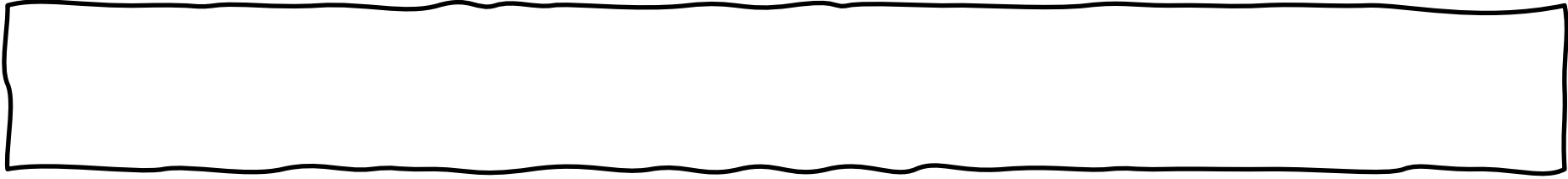
Graduate attributes can be developed in many ways, so it can be useful to consider the prompt questions overleaf.



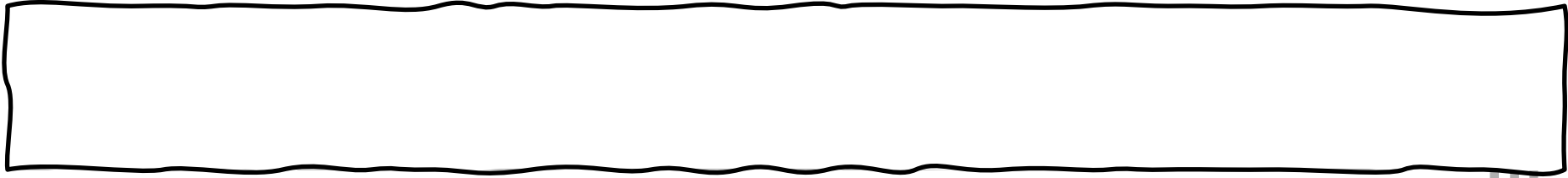
Reflect: How have I developed this attribute through studies and student activities?



Evidence: What specific examples do I have that show my ability in this area?



Plan: How might I develop this attribute further?



# Communication skills



- Digital literacy
- Written communication
- Verbal communication
- Listening
- Presenting
- Public speaking



Using the bullet points above as a starting point, reflect on how you have developed in this area as a result of your studies and student activities.

Graduate attributes can be developed in many ways, so it can be useful to consider the prompt questions overleaf.



Reflect: How have I developed this attribute through studies and student activities?

Evidence: What specific examples do I have that show my ability in this area?

Plan: How might I develop this attribute further?



# Self-management



- Planning study time
- Developing resilience
- Taking initiative
- Efficient and effective
- Positive attitude
- Developing confidence



Using the bullet points above as a starting point, reflect on how you have developed in this area as a result of your studies and student activities.

Graduate attributes can be developed in many ways, so it can be useful to consider the prompt questions overleaf.



Reflect: How have I developed this attribute through studies and student activities?

Evidence: What specific examples do I have that show my ability in this area?

Plan: How might I develop this attribute further?





# Social awareness



- Volunteering
- Work placement
- Ethical behaviour
- Community engagement
- Global awareness
- Equality and diversity



Using the bullet points above as a starting point, reflect on how you have developed in this area as a result of your studies and student activities.

Graduate attributes can be developed in many ways, so it can be useful to consider the prompt questions overleaf.



Reflect: How have I developed this attribute through studies and student activities?

Evidence: What specific examples do I have that show my ability in this area?

Plan: How might I develop this attribute further?



# Interpersonal skills



- Contributing to group projects
- Emotional intelligence
- Honesty and reliability
- Working with difference and diversity
- Giving and receiving feedback constructively



Using the bullet points above as a starting point, reflect on how you have developed in this area as a result of your studies and student activities.

Graduate attributes can be developed in many ways, so it can be useful to consider the prompt questions overleaf.



Reflect: How have I developed this attribute through studies and student activities?

Evidence: What specific examples do I have that show my ability in this area?

Plan: How might I develop this attribute further?

